

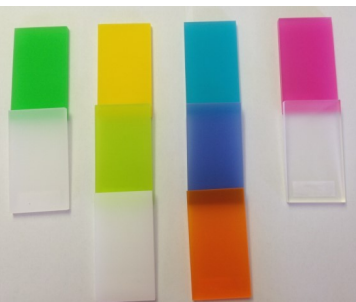
WORKING WITH ACRYLIC

What sizes are available?

All of our acrylic sheets are available in full sheets (these are standard 2440 x 1220 sheets) or cut to size pieces. All you will need to do is provide us with the dimensions or a template of your project and we can get these quote these and get them completed for you.

How much does acrylic cost?

Each piece of acrylic we cut is different so we quote these individually for you to make sure they fit within your project budget. All you need to do is select the material you are after including colour and thickness, check the dimensions you will need and let us know. We are usually able to get back to you in less than 24 hours with a quote and are happy to answer any questions you might have.



How long do they take to cut?

Our cut to size pieces are usually cut within a 24 hour period. This time is only extended in the event that we do not have enough of the sheet onsite. Our sheet is delivered the next day so we try to have these completed within 48 hours at the very latest.

How do you clean Acrylic?

In general dirt does find it hard to stick to perfectly smooth acrylic. Dusty surfaces can be cleaned with water and very small amount of dishwashing liquid, using a soft non-linting cloth or sponge. It is important not to rub the surface dry. We use glass cleaner to clean our acrylic sheet in the factory. The trick is to spray the glass cleaner onto a rag and then shake until the rag is almost completely dry and then wipe the acrylic surface. Spraying the cleaner directly onto the acrylic over time will cause it to deteriorate and haze. The basic principal is to never spray a solvent onto a plastic as it will melt it and cause damage to the sheet.

What Colours are available?

There are a range of thicknesses and colours available all with varying prices. This range is part of our standard acrylic range and is readily available. The acrylic in this range has both solid coloured acrylic, tinted acrylic and clear acrylic. This range is available in a range of thicknesses and sizes however most of the solid colours are only available in 3mm thicknesses.

What other services do you offer surrounding acrylic sheet?

Polished edges— polished edges return the acrylic back to it's original state after being cut with the saw. It removes the harsh rough edges and replaces them with a glass like finish.

Bevelled Edge— this is where an edge is removed or has the angle changed. Commonly seen in the base of lots of trophies.

Radius Edges— provides smooth rounded edges in place of 90 degree corners based on the project requirements.

What you should know before working with Acrylic sheet.

- Always carefully read the statements of the adhesive tape manufacturers.
- Prior to installation, examine whether the dimensions of the cut to size sheets are correct.
- Do not use aggressive scouring agents or solvents and never use brushes or abrasive sponges for cleaning.
- Acrylic must not come into contact with incompatible materials like uPVC or PU sealing compounds and MS polymer insulation materials. We recommend materials such as: ethylene-propylene-terpolymer rubber (EPDM/APTK), polychloroprene, Polyethylene (PE), thermoplastic elastomers (TPE), polytetrafluoroethylene (PTFE), polyamide (PA), and silicone rubber.
- Plexiglas sheets are masked on both sides with environmentally friendly polyethylene film to protect them during transportation and storage. The surface protection must remain on the sheet until the finished part has been finally installed.
- If the sheets are exposed to weathering, the film must be removed within four weeks. If not, there is a risk that the polyethylene film will become brittle or adhere more strongly to the sheet.

